

# FOCUS

C&O

ISSUE 4



[candottractors.com](http://candottractors.com)



## NEW PRODUCT SUPPORT SPECIALIST

C&O have welcomed Calum Hurley to the role of Product Support Specialist based at our South Petherton depot.



Calum will be supporting the sales team in the demonstration and delivery of Massey Ferguson, Kverneland and other key brands. Calum comes from a farming and contracting background.

**Contact Calum on 07513 822 177 or email [calum.hurley@candotracors.co.uk](mailto:calum.hurley@candotracors.co.uk)**

## SOMERSET SERVICE TEAM

David Fry has joined C&O South Petherton as Service Manager, bringing years of expertise to the role and ensuring that the Service department is in expert hands. Craig Hayes has also joined the Somerset team. Craig is a talented engineer and technology specialist, ready to support customers with tech and guidance requirements.

Both David and Craig are well-known figures having supported local customers for many years. Their arrival further enhances C&O's aftersales



Craig Hayes (Service Engineer and Tech Specialist) and David Fry (Service Manager) at C&O South Petherton.

## IN MEMORIAM

### ALLAN FELTHAM

Construction Salesman Allan Feltham passed away in late 2024 after becoming ill in the summer and subsequently being diagnosed with leukaemia,



After many years working in the construction industry Allan joined C&O 9 years ago. He built up a great portfolio of loyal customers and helped build C&O Construction into the successful entity it is today. Allan was steadfast and dedicated to his work and a genuine and kind person who will be greatly missed by the team at C&O.

### MIKE LOADER

Legendary tractor Salesman Mike Loader passed away at the end of 2024. Before his retirement Mike worked in Sales at C&O Blandford for many years, which was the culmination of a tremendous 60 year career selling tractors across Dorset. Mike



was known and respected by many within the farming community and the industry. Mike was an established part of the Stanley Pond team when C&O took over the business and he was invaluable in his support through

the transition and beyond. He will be long remembered by the farmers of Dorset for his passionate dedication to Ford and New Holland.

**STRONG PERFORMANCE,  
SMASHING SAVINGS!**



## GET READY FOR THE UPCOMING SEASON WITH OUR INCREDIBLE OFFERS

### WHICH TRACTOR WILL YOU CHOOSE?

From straightforward models to dependable, high horse-power tractors, benefit from **attractive conditions**.\*

### ARE LOOKING FOR A NEW COMBINE?

Enjoy our **upgraded packages for free\*\*** on our combines models, from the Activa and Activa S to the IDEAL one, including the Beta model.

### WHAT ABOUT A NEW SQUARE BALER ?

Choose yours at an **amazing price\*\*\***, among our ranges of MF SB 1840 & MF SB 1842S small square balers and MF LB 2200 large square baler series.

\*Offer valid on eligible list of tractors with a limited quantity available for the purchase of a new MF tractor before 31.03.2025. All conditions are available in participating MF dealers. Non-contractual photos.\*\*Offer valid on a new MF Activa, MF Activa S and MF Beta purchase before 31.03.2025. The promotional offer applies on the Performance package (COMFSW01) and the Comfort package (PERFSW01), both factory-fitted i.e. a customer benefit of €13558. Offer valid on a new MF Ideal purchase before 31.03.2025. The promotional offer applies on the factory-fitted Performance package (COMFSW01), i.e. a customer benefit of €10280. Non-contractual photos.\*\*\*Offer valid on eligible list of large square balers and small square balers with limited quantity available for the purchase of a new MF machine before 31.03.2025. All conditions are available in participating MF dealers. Non-contractual photos.

**MASSEY FERGUSON** is a global brand of AGCO Corporation.



BORN TO **FARM**



0% FINANCE EXTENDED TO  
**31 MAY 2025**

**0%**  
FINANCE  
AVAILABLE  
ON ALL  
EQUIPMENT\*

## 0% FLEXIBLE FINANCE ON KVERNELAND PARTS

ORIGINAL  
PARTS

### OPTION 1

Defer payment by 6 months at  
**0% flat rate p.a.\***

### OPTION 2

12 monthly payments at  
**0% flat rate p.a.\***

\*Business use only. Terms & conditions apply. Offer available until 31<sup>st</sup> December 2025.

## ECOMAT PLOUGH

Kverneland have taken a whole new look at their Ecomat shallow plough, making it a useful tool for those looking for a min-till approach. "If you're growing combinable crops on shallow soils, ploughing down at 200-250mm/8-10in may be unnecessary if the soil structure is good," said Kverneland plough specialist Adam Burt. The Ecomat now has an on-land version, addressing the issue of tyre size and compaction. On-road the Ecomat uses the Kverneland trailer transport solution providing a safer transit.

Compared to conventional tillage, shallow ploughing saves time and energy. Additionally, the on-land operations limit the potential for

soil compaction while enabling an easier traction.

The result: an equally good crop with less effort. In comparison with reduced tillage systems, the farmer benefits from a more secure and stable cultivation method for better results. The problem of weeds, fungus and other diseases also decreases.

The farmer becomes less dependent on the weather and can work if the soil is relatively moist. Seeds will germinate and grow better in a clean, fine soil layer.

▷ **ANNUAL OR MONTHLY FINANCE OPTIONS**

▷ **GREAT RANGE OF KVERNELAND MACHINERY IN STOCK AT C&O**

▷ **READY TO GO FOR THE SEASON AHEAD**

GRASSLAND

FEEDER/BEDDERS

CULTIVATION

SPREADERS

Finance subject to Terms and Conditions.





## C&O WILLAND NEW DEPOT CELEBRATES FIRST ANNIVERSARY

C&O's newest and most westerly depot was a stunning addition to C&O's portfolio when it opened in 2024. The depot is managed by Sales Manager Ian Skinner, a very familiar face to many in the Devon farming community, a former contractor himself Ian has been in the business of selling tractors for the past 12 years.

'We're just coming up for our first anniversary in the new depot, it's a fantastic facility, we have a great parts department, the workshop space is superb and I have a base to meet customers and manufacturers' said Ian.

The team at C&O Willand is continuing to grow, Ian covers Sales, Aftersales are managed by Matt Hellyer and the team are supported by Service Engineer Lloyd Garton and Administrator Mana Warne.



AFTERSALES  
MATT HELLYER



DEPOT ADMINISTRATOR  
MANA WARNE



SERVICE ENGINEER  
LLOYD GARTON

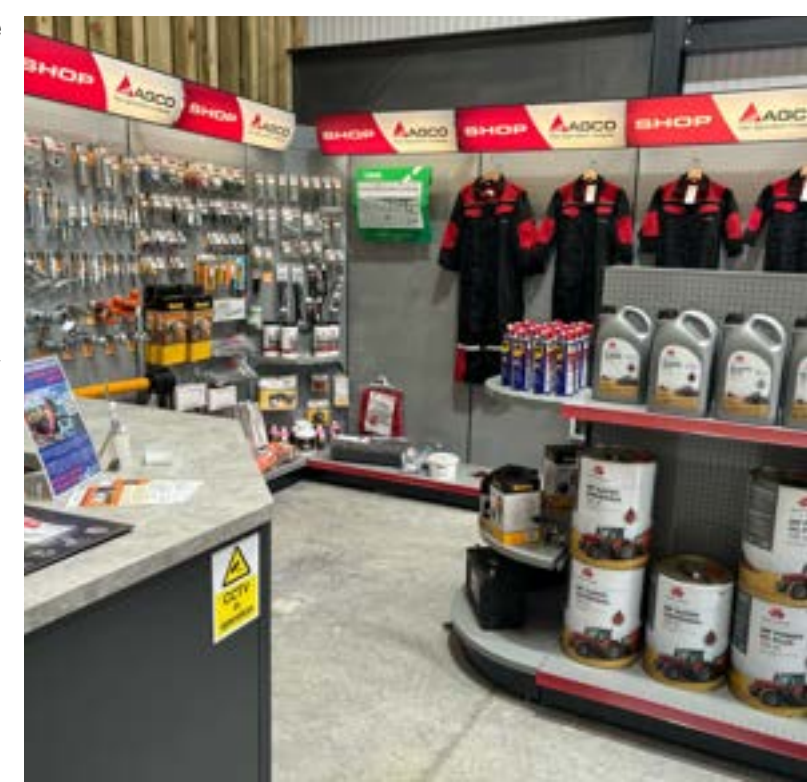


In his Aftersales role Matt Hellyer is responsible for the the new parts stores and the workshop. The stores are fully operational, supplying AGCO and Kverneland parts, Massey Ferguson clothing and merchandise and other agricultural essentials delivered by AGCO's complementary supplier Sparex.

The Willand workshop is fully resourced and Service Engineer Lloyd Garton is able to support customers at the depot or on site. The Willand team work closely with C&O's South Petherton depot located just off the A303 in Somerset where Service Manager David Fry leads a team of six engineers.

C&O are recruiting for more engineers to join the team in Devon and interested candidates should contact

[careers@candotracors.co.uk](mailto:careers@candotracors.co.uk)



**C&O**  
PITT FARM  
MUXBEARE LANE  
WILLAND  
CULLOMPTON  
DEVON  
EX153BY

**01884 400 100**





## TAKING CONTROL OF YOUR CASH FLOW COULDN'T BE EASIER WITH AGCO PLUS+

**AGCO Plus+**\* is a credit account for all your parts and service purchases. It provides you with flexible payment, giving you more control over your business cash flow.

**Enjoy up to 60 days with no interest** or repayments on all your purchases as standard, and if you're spending over £5,000 you'll qualify for up to 180 days with no interest or repayments.

**AGCO Plus+ is a short term finance solution**, designed with a farmer's variable cash flow in mind. From in-season service and repairs to off-season preventative care, AGCO Plus+ can help to keep your machinery in good condition avoiding unnecessary downtime and repairs and can be used for all

Terms & Conditions \*UK business users (VAT registered) only. Terms and conditions apply and your C&O Parts team for more information. purchases from C&O, from wellies to warranty. When you purchase genuine AGCO Parts or qualifying aftersales products\*\* with your AGCO Plus+ account at participating dealers, you'll earn 2% SMART Reward Cash.

## PREPARE TODAY TO INCREASE YOUR PRODUCTIVITY TOMORROW

### CAB COMFORT & PERFORMANCE

Upgrade your cab for better performance in the field. Cool clean air, a back saving seat, improved visibility and a great sound system. All part of the Massey Ferguson range of solutions designed to help you work better for longer.

### STOCK UP

Stay at your most responsive on the farm by having essentials on hand. Top up your supply of quality combine and baler parts plus oils, grease and other consumables.

### ACCESSORIES

By installing front linkage and a PTO, or a front loader, you can ensure your machine has everything it needs for the work ahead. Check out the new Smart Top Link and aim for an even spread and cost savings.

purchases from C&O, from wellies to warranty.

### SMART REWARDS

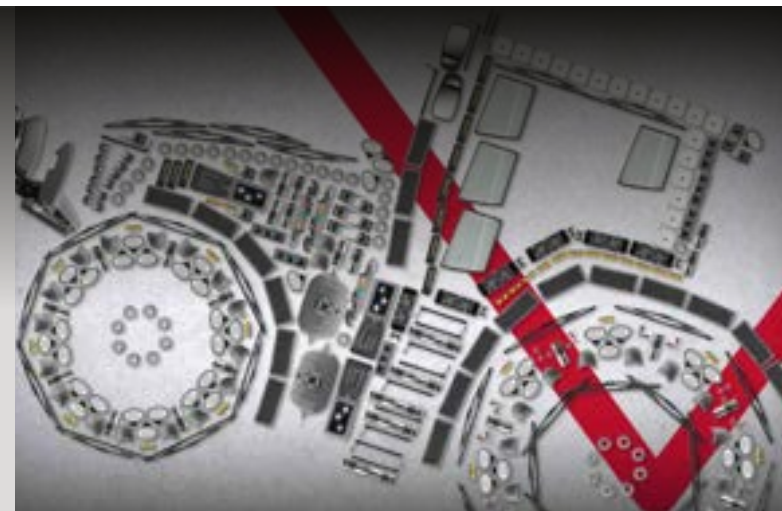
When you purchase genuine AGCO Parts or qualifying aftersales products\*\* with your AGCO Plus+ account at participating dealers, you'll earn 2% SMART Reward Cash.

- UP TO 60 DAYS INTEREST FREE CREDIT AS STANDARD
- UP TO 180 DAYS INTEREST FREE CREDIT ON INVOICES OVER £5,000
- 2% SMART REWARDS CASH\*\* WHEN YOU PURCHASE GENUINE AGCO PARTS OR QUALIFYING PRODUCTS.

No interest will be charged if you pay in full before the end of the interest free period. If you do not pay in full you will be charged interest on any balance remaining at the end of the interest free period. Failure to pay may impact your ability to obtain credit in the future.

### SIGN UP TODAY

Visit <https://agcoplus.agcofinance.com/> or talk to your C&O Parts team for more information.



**Rely on Massey Ferguson and C&O** to help you prepare for a busy season ahead. Discover a selection of essentials, innovative accessories and **dependable solutions for your machine.**



THE  
PERFECT  
FIT



**AFFORDABLE EFFICIENCY**

## MF 5M | 95-145 HP THE COST-EFFECTIVE CHOICE

### THE VERSATILITY YOU LOOK FOR

Make it the perfect ally for all types of farms

### THE LEVEL OF QUALITY YOU ENJOY

Keep functions at your fingertips, in its roomy cab

### THE FACTORY-FITTED OPTIONS YOU BENEFIT FROM

Enhance your efficiency with a wide range of factory-supplied options



BORN TO **FARM**

MASSEY FERGUSON\* is a global brand of AGCO Corporation.



CALL OUR SALES TEAM FOR  
DETAILS AND MORE STOCK



0% FINANCE AVAILABLE



**KV 3332MT MOUNTED MOCO**  
REF: 30074331. 3.2M, 8 DISC



**KV 3332FT FM-MOCO**  
REF: 10074332. 3.2M, 8 DISC



**MF DM316 TL-V-KC**  
REF: 10074106. C/W PARKING JACKS



**KV 3332MT MOUNTED MOCO**  
REF: 10075658. C/W REPLACEMENT KIT



**KV ENDURO CULTIVATOR**  
REF: 50072764. **£42,250**



**KV 5M QUALIDISC**  
REF: 20072461. **£46,950**



**MF 3130 F XTRA RB**  
REF: 10073390. **£36,830**



**KV FRD280 TOPPER**  
REF: 40073368. HAMMER BLADES



**KV 8452 TEDDER**  
REF: 10075657. 5.20M WORKING WIDTH



**MF RK 662 TRC RAKE**  
REF: 10072142. 580-660M WORKING WIDTH, 2 ROTORS, STANDARD PTO



**MF TD 776X**  
REF: 30075055. STANDARD PTO



**OPICO 6M GRASS HARROW**  
REF: 10072470. HYDRAULIC-FOLDING, 8MM TINES



**KV EXACTA EL**  
REF: 20074660. 1400LTR



**KV TL SPREADER**  
REF: 10072364. G2 WITH TRIM FLOW/EXACT LINE



**KV CL1100P PRO SPREADER**  
REF: 40067455. W/ HYDRAULIC CONTROL



**KV EXACTA TL GEOSPREAD**  
REF: 10072362. 1500 G2, TRIM FLOW/EXACT LINE, 2 X HOPPER EXTENSIONS



**KV DUO 18 EX-DEMO**  
REF: 30074108. **£46,500**



**KV TS DRILL**  
REF: 50072649. 6M, 2022



**KV SILOKING 3022 USED**  
REF: 10075634. **£15,750**



**KV IXTER B PRO 24M**  
REF: 10072470. 1800L **£38,500**



**SANY SY26C**



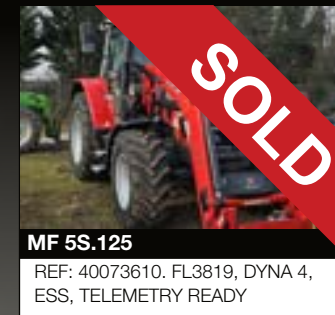
**SANY SY19E**  
REF: 40073122.



**SANY SY18U**  
REF: 40075016.



**SANY SY80U**  
REF: 40075455.



**MF 5S.125**  
REF: 40073610. FL3819, DYNA 4, ESS, TELEMETRY READY



**MF 8S.265**  
REF: 30071796. FRONT LINK & PTO  
**£115,500**



**MF 7S.190**  
REF: 10075813. DYNA VT, EXC  
**£89,950**



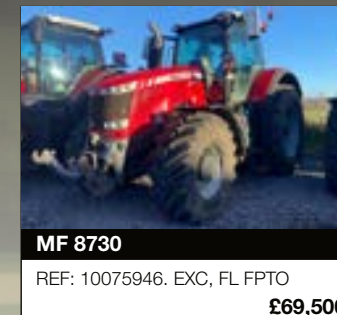
**MF 8S.225**  
REF: 10073512. DYNA VT, EXC, FRONT PTO, TRIMBLE AUTOGUIDE



**MF 7S.210**  
REF: 10073505. DYNA VT, EXC, NOVATEL AUTOGUIDE



**MF 7S.210**  
REF: 30070870. DYNA VT, EXC, TRIMBLE AUTOGUIDE



**MF 8730**  
REF: 10075946. EXC, FL FPTO  
**£69,500**



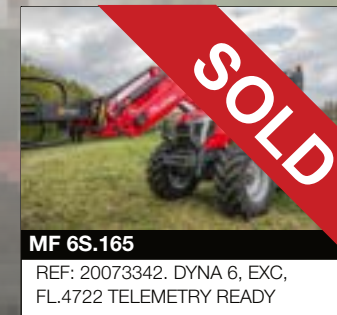
**MF 7S.180**  
REF: 30073479. DYNA 6, EXC, NOVATEL AUTOGUIDE



**MF 6S.180 LIMITED EDITION**  
REF: 10072033. DYNA 6, NOVATEL AUTOGUIDE



**MF 7S.210**  
REF: 10073504. DYNA VT, NOVATEL AUTOGUIDE SM



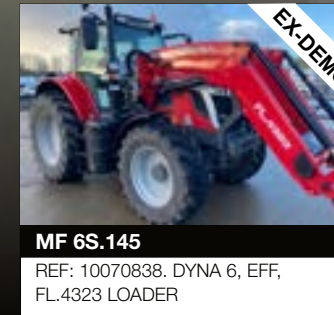
**MF 6S.165**  
REF: 20073342. DYNA 6, EXC, FL4722 TELEMETRY READY



**MF 6S.165**  
REF: 10073344. DYNA 6, EXC, 540/65R28 & 650/65R38 TYRES



**MF 5S.125**  
REF: 60072821. DYNA 4, EFF, LOADER & TELEMETRY READY



**MF 6S.145**  
REF: 10070838. DYNA 6, EFF, FL4323 LOADER



**MF 5S.145**  
REF: 40074775. DYNA 6, EFF, LOADER INCLUDED, 2024



**MF 4708M**  
REF: 10073286. WATER KIT INCLUDED, AUTOHITCH



STRONG PERFORMANCE  
**SMASHING SAVINGS!**

FIND THE PERFECT DEAL  
ON TRACTORS, SQUARE  
BALERS AND COMBINES

Terms & conditions apply

ALL PRICES EXCL. VAT. E&OE/PHOTOS FOR ILLUSTRATION/SUBJECT TO T&CS.

ALL PRICES EXCL. VAT. E&OE/PHOTOS FOR ILLUSTRATION/SUBJECT TO T&CS.





### DORSET HEAD OFFICE

Blandford Heights  
Blandford  
Dorset  
DT11 7TF

**01258 451 221**

dorset@candotracors.co.uk

Matthew Holland  
Ben Best

07980 730 240  
07980 730 244

### ISLE OF WIGHT

Forest Road  
Newport  
Isle of Wight  
PO30 5QJ

**01983 524 413**

isleofwight@candotracors.co.uk

Lee Priddle  
Charlie Calloway

07725 813 384  
07467 211 211

### W. SUSSEX & E. HANTS

New Barn Farm  
Funtington  
West Sussex  
PO18 9DA

**01243 682 025**

westsussex@candotracors.co.uk

Philip Prior  
Debbie Cant

07842 365 265  
07980 730 243

### DEVON

Muxbeare Lane  
Uffculme WILLAND DEPOT  
Devon  
EX15 3BY

**01884 400 100**

devon@candotracors.co.uk

Ian Skinner

07759 128 381

### SOMERSET

Yeabridge Farm  
South Petherton  
Somerset  
TA13 5LW

**01460 241 286**

somerset@candotracors.co.uk

Calum Hurley

07513 822 177

### WILTSHIRE & W. HANTS

West Street  
Wilton  
Wiltshire  
SP2 0DG

**01722 742 141**

wiltshire@candotracors.co.uk

Paul Lyford

07980 730 242

Visit our website and social media for more details on your local C&O team, brands, opening hours and contact details.



**candotracors.com**



MASSEY FERGUSON

