



BOOST YOUR PERFORMANCE INCREASE YIELDS

MF TRACTORS/ 105 - 405 HP*

MF GUIDE

Cuts overlaps with 12% fuel saving, reducing time and minimizing operator fatigue

MF SECTION & RATE CONTROL

Further enhances application accuracy

WAYLINE ASSISTANT

Allows precise machine guidance along the field boundaries

MF TASK DOC PRO

Transfer data in real time, reduce waste, costs and boost yields.

SAVE UP TO £1,350
**ON YOUR PRECISION
FARMING PACKAGE
FOR YOUR NEW
MF TRACTOR**

VALID UNTIL 31st DEC 2021

* Offer valid until Dec 31st, 2021 for the purchase of a new MF 5S, MF 6700 S, MF 7700 S, MF 8S or MD8700 S with Precision Farming Package. Limited time offer at participating MF Dealers, subject to availability. Terms & conditions apply. For more information contact C&O Tractors, 01258 451 221.



MASSEY FERGUSON

For on call/out of hours assistance please contact your local depot:

Blandford Heights
Blandford
Dorset
DT11 7TF
01258 451221

West Street
Wilton
Wiltshire
SP2 0DG
01722 742141

New Barn Farm
Funtington
West Sussex
PO18 9DA
01243 682025

Forest Road
Newport
Isle of Wight
PO30 5QJ
01983 524 413



**Please wear a mask
when visiting our stores
and showrooms**

CUSTOMER CYBERCRIME WARNING

We would like to remind all customers that cybercrime is increasing. It is reported that criminals across the Globe are attempting to intercept emails and have been known to pose as someone they are not to gain personal or financial information.

Whilst we are exceptionally thorough in our data storage and adhere stringently to GDPR (General Data Protection Regulation 2016) we ask that all customers remain vigilant.

Please note that C&O Tractors **do not** intend on changing our bank details in the near future, however if you do receive communication purporting to be from C&O Tractors Limited requesting our bank details to be changed, then please contact our accounts team on 01258 451 221 who will be able to clarify.

STRONGER THAN EVER!

Carbide reinforced

Extreme wear resistance

Extended lifetime

Perfect fit

XHD

CARBIDE

NEW LINE OF REINFORCED PARTS

More information at uk.kverneland.com/XHD

The Future of Farming



COMING UP: Kverneland Sprayer and Spreader demo

Book your space now

West Sussex 6th July call C&O Funtington 01243 682 025
Wiltshire 8th July call C&O Wilton 01722 742 141



C&O TEAM CONTINUES TO GROW

The C&O team is continuing to grow and we'd like to introduce you to our newest team members.

Macaulay Forward has joined the Sales Team at C&O Blandford to lead on Massey Ferguson and agricultural machinery sales in West Dorset/Somerset borders. Macaulay is an experienced agricultural salesman who brings with him great knowledge of the Kverneland range, which he can deliver beyond our Massey Ferguson area throughout southern Somerset.

Macaulay can be contacted through the Blandford depot on 01258 451 221 or on 07510 926 996.



Mark Francis has joined the Sales Team as Product Specialist and Demonstrator. Mark joins us after years working for Massey Ferguson and his product knowledge is second to none.

Mark will be working closely with the sales team demonstrating our fleet of Massey Ferguson kit, including the new 8S & 5S tractors to ensure our customers get the most from their machinery.



Graham Kendall has joined C&O to lead the Blandford workshop. He's come from a local agricultural dealership and also brings extensive experience from the truck and vehicle industry.

Graham can be contacted in the Blandford workshop on 01258 486 212.

Following the success in UK and across Europe of the 3m, 4m and 6m *EasyDrill*, SkyAgriculture have introduced an 8m model into the range. The W8020 Fertisem *EasyDrill* follows the same exacting standards and design principals as the 4m and 6m pneumatic drills, sharing the same coulters line, multi hopper capacity and sophisticated electronic system.

- ✓ Versatile
- ✓ 4 hoppers/2 depths
- ✓ Front depth/press wheel
- ✓ Depth control/Pressure adjustment
- ✓ Chamfered rear closing wheel
- ✓ Separate seed and fertiliser distribution circuits
- ✓ ADS distribution head
- ✓ Optional E-Drive premium

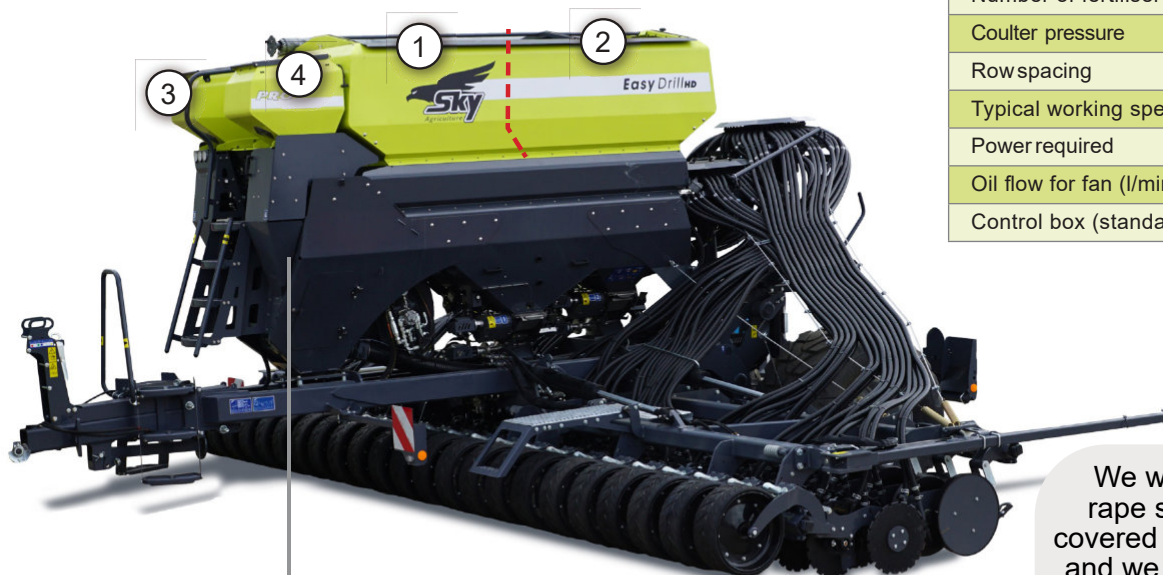
The main hopper is split between grain and fertilizer ① & ② each with their own pneumatic distribution. In addition, the option of up to two separately metered PRO hoppers ③ & ④ can be integrated so that seed or microgranules can be introduced via either distribution circuit.

The ability to drill at two different depths, provides accurate and separate seed and fertiliser placement, increasing efficacy of applied nutrients and eliminating the risk of shoot burn with certain fertilisers.



W 8020
Fertisem

Working width	8m
Transport width	3m
Weight (without options)	9,250kg
Grain hopper	2,295L 3,060L 5,000L
Fertisem hopper	2,040L 2,805L 100L
PROI hopper	120
PROII hopper	120
Loading opening	1.08m x 2.58m
Loading height	3.20m
Number of coulters	48
Number of fertiliser outlets	48
Coulter pressure	250kg
Row spacing	16.6cm
Typical working speed	6-12km/h
Power required	150 - 360hp
Oil flow for fan (l/min)	40
Control box (standard)	Quartz 800



SKYAgriculture
8m *EasyDrill* E-Drive premium
4 Hoppers

George & Dougal Hosford,
Travellers Rest Farm, Dorset

We were sowing into a rape stubble still largely covered in dying rape plants, and we have been amazed what a good job the Sky Drill has done, the wheat has emerged evenly and is growing well.

OPICOLtd 01778 421111 ask@opico.co.uk sky-agriculture.co.uk



Profit from our knowledge



IDEAL HARVEST 2021

C&O's demonstration combine for Harvest 2021 has arrived with us from the Massey Ferguson factory in Breganze, Italy. The IDEAL 7 PL combine is now being prepared ready for its first demonstrations to customers.

The IDEAL 7 is a Paralevel combine and comes with a 7.7m/25ft Powerflow header, 451hp, Autoguidance to Novotel subscription, 4WD, Single helix rotor threshing system, Streamer 140 (140 l per second unload rate) and 12,500 l grain tank.

The IDEAL will be demonstrating across the C&O region. Contact your sales rep to discuss your combining requirements or visit our YouTube channel at www.youtube.com/candotractorsltd to see the action from Harvest 2020.



C&O Tractors Ltd

01258 451 221



MASSEY FERGUSON

www.candotracors.com

BLANDFORD

Matthew Holland 07980 730240
Ben Best 07980 730244
Macaulay Forward 07510 926996

WILTON

Paul Shutler 07980 730242
Andrew Burch 07980 730254

FUNTINGTON

Philip Prior 07842 365265
Debbie Cant 07980 730243

ISLE OF WIGHT

Lee Priddle 07725 813384

www.candotracors.com/agriculture/stock for more NEW, USED, EX-DEMO & EX-HIRE STOCK



40064841

MF 7719 S
50 KPH, DVT, AUTOGUIDE
READY - £79,950



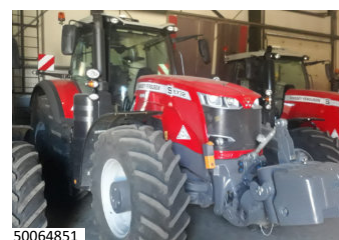
20065916

MF 7720 S
DYNA 6, 50 KPH, TRIMBLE
GUIDANCE - £86,500



10065923

MF 7726 S
DYNA VT, PTO, TRIMBLE
GUIDANCE - £112,000



50064851

MF 8732 S
DYNA VT, NOVATEL
GUIDANCE - £135,000



MF 662
TRC RAKE
£11,450



MF DM 316 TL-V-KC
MOWER CONDITIONER
£12,750



TEAGLE TITAN 9
REAR DISCHARGE SPREADER
£17,950



HE-VA
DISC ROLLER CONTOUR
£26,850

USED MACHINERY

TRACTORS, HANDLERS & BALERS

244E SIROMER COMPACT	40068938	£6,500
CLASS ROLLANT 46 BALER	10068497	£4,950
JOHN DEERE 592 ROUND BALER	20059414	£7,000
MF 5710 C/W LOADER	20068942	£25,000
MF 6715 D6 EFF	20068455	£48,000
MF 7726	50068525	£62,000
MF TH8043 TELEHANDLER	40067383	£59,000
MF TW130 TRAILED BALE WRAPPER	40067721	£10,250
FORD 5610 C/W LOADER	20068536	£6,000
FORD 5610 2WD C/W LOADER	20069099	£7,500
ZETOR ROUND BALER	20066727	£5,250

ATVS & UTV

CAN-AM HD8 DPS TRAXTER	3JBUGAN7	£9,750
CAN-AM TRAXTER HD8 UTV	40068867	£11,500
CAN-AM OUTLANDER 500 ATV	10068553	£3,750
HONDA TRX420 ATV	10066414	£4,250
HONDA TRX420 ATV	10066585	£3,000
HONDA TRX 500 FM2 GREEN ATV	10068315	£5,250
HONDA TRX 500 FA6 ATV	10068864	£6,000

HONDA TRX FOREMAN FM6	10068952	£6,000
HONDA TRX 350 ATV	20068206	£1,500
JOHN DEERE GATOR UTV	20068880	£850
JOHN DEERE GATOR UTV	20068909	£8,500
KAWASAKI MULE ATV	10052619	£3,500
POLARIS RANGER EV UTV	10068781	£10,000
POLARIS D1000 UTV	20065215	£5,500
POLARIS RANGER 902 UTV	20068385	£9,000
POLARIS SPORTSMAN ATV	20068852	£2,750
POLARIS 902 RANGER UTV	20069109	£9,500

AGRICULTURAL MACHINERY

6FT MOUNTED TOPPER	20065742	£700
CASE SKIDSTEER	20068537	£6,500
CHAIN HARROWS	10069022	£950
IFOR WILLIAMS DP120 TRAILER	10068496	£3,250
JOHN DEERE MOWER	20066851	£750
KRM M2 TREND FERT. SPINNER	40056455	£2,500
KUHN 1142 FERT SPREADER	20059893	£1,950
KVERNELAND 9142 RAKE	10068629	£2,000
KVERNELAND NGS 101 F35 DRILL	40063645	£7,500
KVERNELAND KV 2012 GEO SPREAD	20065712	£5,500
LOGIC OBS135 SPRAYER	10064650	£1,250

B LOGIC OBS137SE SPRAYER	10067967	£1,000
W MARSHALL TRAILER	20056151	£1,200
W MOWER CONDITIONER	20066571	£600
W QUICKIE 150 SILOGRAB	40068708	£750
B QUICKIE FL4121 BRACKETS	10068032	£1,100
B ROUND BALE HANDLER	20045440	£550
W S. REYNOLDS 6M GRASS HARROW	10068954	£2,650
W S. REYNOLDS 656 HEDGE CUTTER	20068684	£12,250
W SULKY DRILL	40060347	£2,000
W TEAGLE XT48 FERTILISER SPREADER	10069013	£1,500
TEAGLE CENTRELINER FERT SPREADER	20065262	£5,500
W TRAFALGAR TRAILED PADDOCK CLEANER		
W C/W HONDA ENGINE IN EXCELLENT COND.		£1,950
W VICON CM168 DRUM MOWER	40067322	£950
B GARDEN MACHINERY		
W 325HE3 HEDGE CUTTER	20066581	£200
I HONDA HF2417HM 40"	20067366	£3,000
W JOHN DEERE JX90 PEDESTRIAN	10055158	£800
B LAWNFLITE 038VO 15" SCARIFIER	10062591	£450
I WESSEX PTO PADDOCK SWEEPER	40065641	£350

PRICES EXCLUDE VAT - E&OE

HARVEST SUPPORT

USE MAIN DEPOT NUMBERS TO BE CONNECTED TO OUT OF HOURS SUPPORT. HOURS TO EXTEND WHEN COMBINES ROLLING. CHECK FACEBOOK & WEBSITE FOR UPDATES.

BLANDFORD
FUNTINGTON
IOW

01258 451 221
01243 682 025
01983 524 413

MON-FRI
SAT

8AM-5PM
8AM-12PM

WILTON

01722 742 141

MON-FRI
SAT
SUN

8AM-5PM
8AM-4PM
8AM-12PM



ISUZU



MASSEY FERGUSON



Quicke



HONDA



PRICES EXCLUDE VAT - E&OE- NOT ALL BRANDS AVAILABLE AT ALL DEPOTS - SOME IMAGES FOR ILLUSTRATION PURPOSES